



CARSON 25 JG KING

\$790,083

LOT 1013

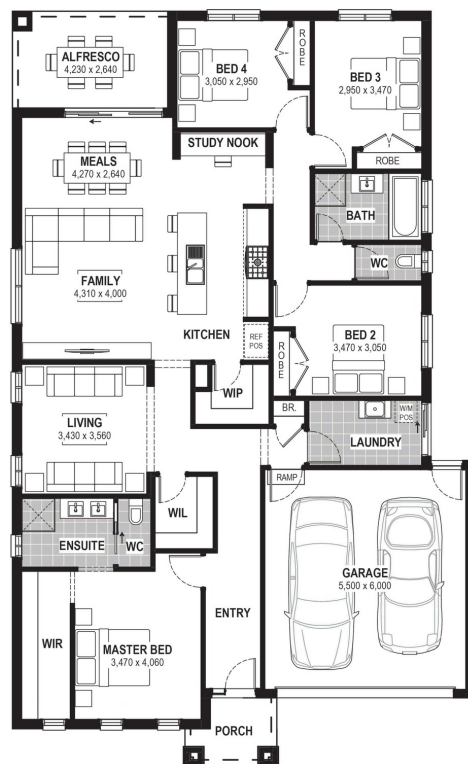
AREA: 428m²

FRONTAGE: 15.89m

DEPTH: 28.00m

Inclusions

BLUESCOPE STEEL HOUSE FRAME
 COLORBOND ROOF WITH SARKING
 7 STAR ENERGY EFFICIENT
 EUROPEAN-STYLED (UPVC) DOUBLE GLAZED WINDOWS & DOORS
 900MM RANGEHOOD & UPRIGHT COOKER
 OVERHEAD CUPBOARDS TO KITCHEN
 PROFESSIONAL COLOUR CONSULTATION
 TILED SHOWER BASES
 WINDOW LOCKS TO ALL OPENABLE WINDOWS
 REMOTE GARAGE DOOR WITH OPENERS
 BUSHFIRE COMPLIANCE UP TO BAL 12.5
 50 YEAR STRUCTURAL GUARANTEE
 2550MM CEILING HEIGHT
 DEVELOPER GUIDELINES INCLUDED
 LAMINATE FLOORING & CARPET THROUGHOUT



Call 1300 268 629

Visit Our Sales Suite 7 DAYS 11AM TO 5PM.

1438 Plumpton Rd, Plumpton VIC 3335

accoladerockbank.com.au

red23



Resi Ventures