



## FRANKLIN 22 JG KING

**\$795,783**

**LOT 1006**

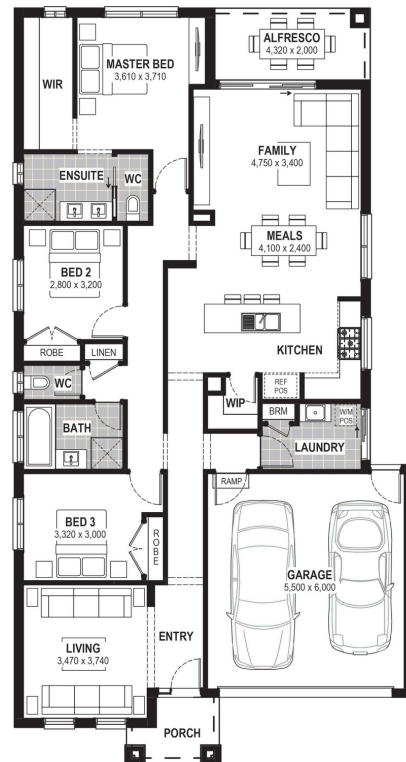
**AREA: 470m<sup>2</sup>**

**FRONTAGE: 13.09m**

**DEPTH: 35.39m**

### Inclusions

BLUESCOPE STEEL HOUSE FRAME  
 COLORBOND ROOF WITH SARKING  
 7 STAR ENERGY EFFICIENT  
 EUROPEAN-STYLED (UPVC) DOUBLE GLAZED WINDOWS & DOORS  
 900MM RANGEHOOD & UPRIGHT COOKER  
 OVERHEAD CUPBOARDS TO KITCHEN  
 PROFESSIONAL COLOUR CONSULTATION  
 TILED SHOWER BASES  
 WINDOW LOCKS TO ALL OPENABLE WINDOWS  
 REMOTE GARAGE DOOR WITH OPENERS  
 BUSHFIRE COMPLIANCE UP TO BAL 12.5  
 50 YEAR STRUCTURAL GUARANTEE  
 DEVELOPER GUIDELINES INCLUDED  
 LAMINATE FLOORING & CARPET THROUGHOUT  
 SITE COSTS ALLOWANCE INCLUDED



**Call 1300 268 629**

Visit Our Sales Suite 7 DAYS 11AM TO 5PM.

1438 Plumpton Rd, Plumpton VIC 3335

[accoladerockbank.com.au](http://accoladerockbank.com.au)

**red23**



Resi Ventures