



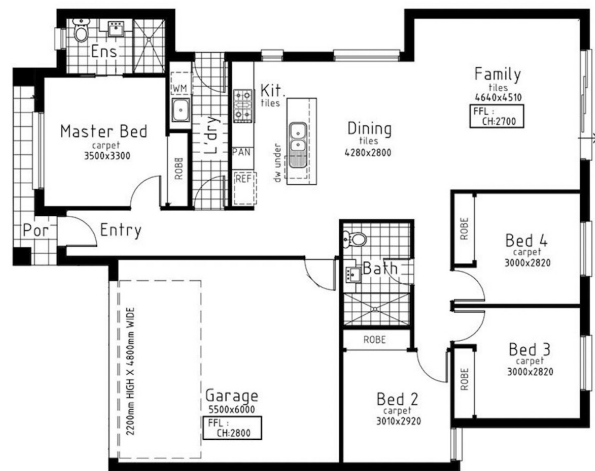
## LOT 1505 ASAC PROPERTY GROUP

**\$643,000**

**LOT 1505**  
**AREA:** 351m<sup>2</sup>  
**FRONTAGE:** 15.89m  
**DEPTH:** 23.14m

### Inclusions

- CUSTOMISED FLOORPLANS
- 7 STAR ENERGY RATINGS TO THE HOUSE
- FIXED SITE COSTS\*
- COLOURED CONCRETE DRIVEWAY
- FLOORING THROUGHOUT - CARPET AND TILES
- LED LIGHTING TO PORCH, ENTRY, KITCHEN, MEALS, LIVING & BEDROOMS
- BRICK INFILLS ABOVE ALL WINDOWS & DOORS
- 2700MM CEILING HEIGHTS
- STONE BENCHTOPS TO KITCHEN & BATHROOMS
- REFRIGERATED HEATING & COOLING
- HOLLAND BLINDS



**Call 1300 268 629**

Visit Our Sales Suite 7 DAYS 11AM TO 5PM.

1438 Plumpton Rd, Plumpton VIC 3335

[accoladerockbank.com.au](http://accoladerockbank.com.au)

**red23**



Resi Ventures