



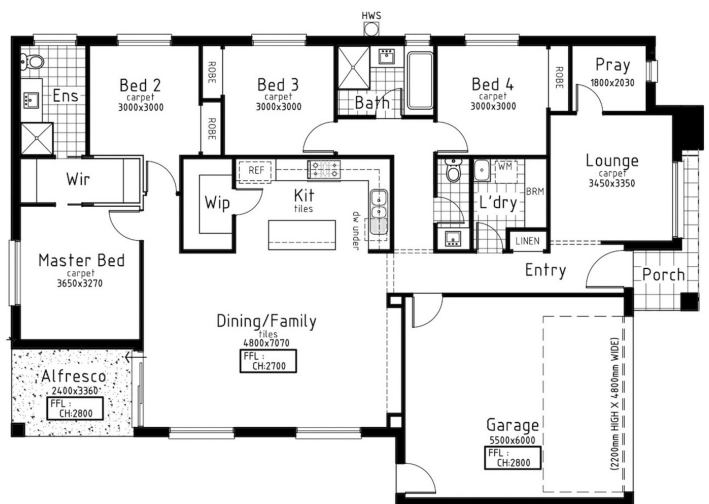
LOT 1012
ASAC PROPERTY
GROUP

\$721,000

LOT 1012
AREA: 392m²
FRONTAGE: 14m
DEPTH: 28.00m

Inclusions

- CUSTOMISED FLOORPLANS
- 7 STAR ENERGY RATINGS TO THE HOUSE
- FIXED SITE COSTS
- COLOURED CONCRETE DRIVEWAY
- FLOORING THROUGHOUT - CARPET AND TILES
- LED LIGHTING TO PORCH, ENTRY, KITCHEN, MEALS, LIVING & BEDROOMS
- BRICK INFILLS ABOVE ALL WINDOWS & DOORS
- 2700MM CEILING HEIGHTS
- STONE BENCHTOPS TO KITCHEN & BATHROOMS
- REFRIGERATED HEATING & COOLING
- HOLLAND BLINDS



Call 1300 268 629

Visit Our Sales Suite 7 DAYS 11AM TO 5PM.

1438 Plumpton Rd, Plumpton VIC 3335

accoladerockbank.com.au



Resi Ventures